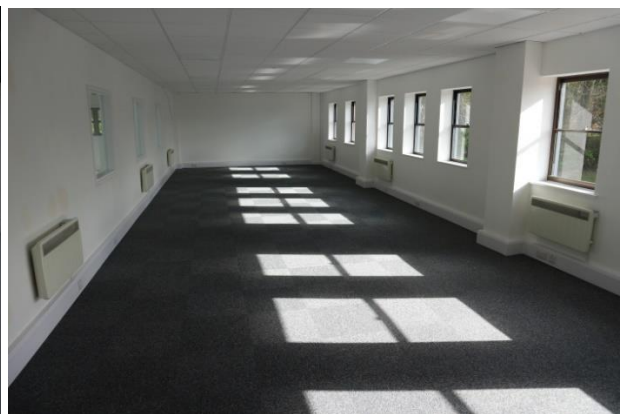


TO LET

Unit 6, Tavistock Industrial Estate,
Ruscombe Lane, Twyford, Reading,
Berkshire, RG10 9NJ



www.TLRE.co.uk



Fully refurbished
warehouse/Industrial unit

5,048 sq ft (468.96 sqm)

Unit 6 Tavistock Industrial Estate, Ruscombe Lane, Twyford, Reading Berkshire, RG10 9NJ.



www.TLRE.co.uk

Description

The premises comprise an end of terrace industrial/warehouse unit of traditional steel portal frame construction with brick and blockwork elevations.

The unit benefits from an electric roller shutter door, LED lighting to the warehouse, 3 phase power and translucent roof panels. The unit also benefits from fitted offices on the first floor. The eaves height is 5.3m.

The unit also provides a generous loading apron for loading in addition to a dedicated car parking area.

Location



The Tavistock Industrial Estate is located in Ruscombe on the periphery of Twyford. Twyford is approximately 1½ miles from the A4, which in turn connects with both the A404M and A329M providing easy access to Junctions 8/9 and 10 of the M4, Heathrow Airport and the national motorway network.

Twyford railway station is within walking distance, providing regular services to London (Paddington).

Terms

The unit is available on a new lease to be agreed, direct from the landlord.

Legal Costs

Each party to bear their own legal costs.

Business Rates

Occupiers are invited to make their own enquiries.

EPC's

Available on request.

Accommodation

| | Sq ft | Sq m |
|---------------------|--------------|---------------|
| Warehouse | 3,430 | 318.65 |
| Undercroft | 809 | 75.16 |
| First Floor Offices | 809 | 75.16 |
| Total | 5,048 | 468.96 |

Sharps Commercial – Alec White

Tel: 0118 939 1600

Email: awhite@sharpscommercial.co.uk

Ed Thomason

Tel: 07818 065 276

Email: et@tlre.co.uk

Paul Londra

Tel: 07779 269 290

Email: pl@tlre.co.uk

Important notice: TLRE for itself, the vendors or lessors, of this property for whom it acts, gives notice that the sole purpose of these particulars is to provide outline information on this property, to prospective purchasers or tenants as applicable. Who are solely responsible for making their own investigations or taking independent advice, including the cost of doing so and forming their own view as to the condition of the property its fitness for their requirements and the accuracy or completeness or any description of the statements herein. These particulars do not constitute any recommendation or offer to enter into a contract in regards to the properties above. TLRE does not guarantee the description, dimensions references to condition, necessary permissions for use and other occupations contained herein and prospective purchasers or tenants must not rely upon them as statement of fact or representations. Rents quoted may be subject to VAT. Neither TLRE nor the vendors of this(these) properties accept any liability or responsibility (whether in negligence or otherwise) arising from loss from using these particulars. Any reference to any plant machinery equipment services fixtures and fittings shall not constitute a representation (unless otherwise expressly stated) as to its state or condition or that it is fulfilling its intended function. Neither TLRE, its directors, employees or agents, has any authority to make, and does not make, any representation or warranty or to enter into any contract in relation to the property or properties. TLRE September 2022